

K-25OP DLC

CERAMIC MIXING CARTRIDGE
CONVENTIONAL SINGLE-LEVER TYPE

25 MM SIZE



MADE in the EUROPEAN UNION

DLC COATED KEROX CERAMIC DISCS

- Improved durability
- Withstands aggressive cleaning agents
- Works well with or without grease

DIAMOND-LIKE CARBON COATING

- Utilizes the hardest material known to man
 - Diamond-like structure
 - Makes surface harder
 - Environmentally friendly
- Rotational action provides temperature control.
The mixed water runs out from two outputs simultaneously (house and bottom).
 - Opening action provides flow rate control.

TECHNICAL CHARACTERISTICS OF THE CERAMIC DISCS:

Material:	Al_2O_3
Surface roughness Ra:	0.3 μm
Contact surface area:	50-80%

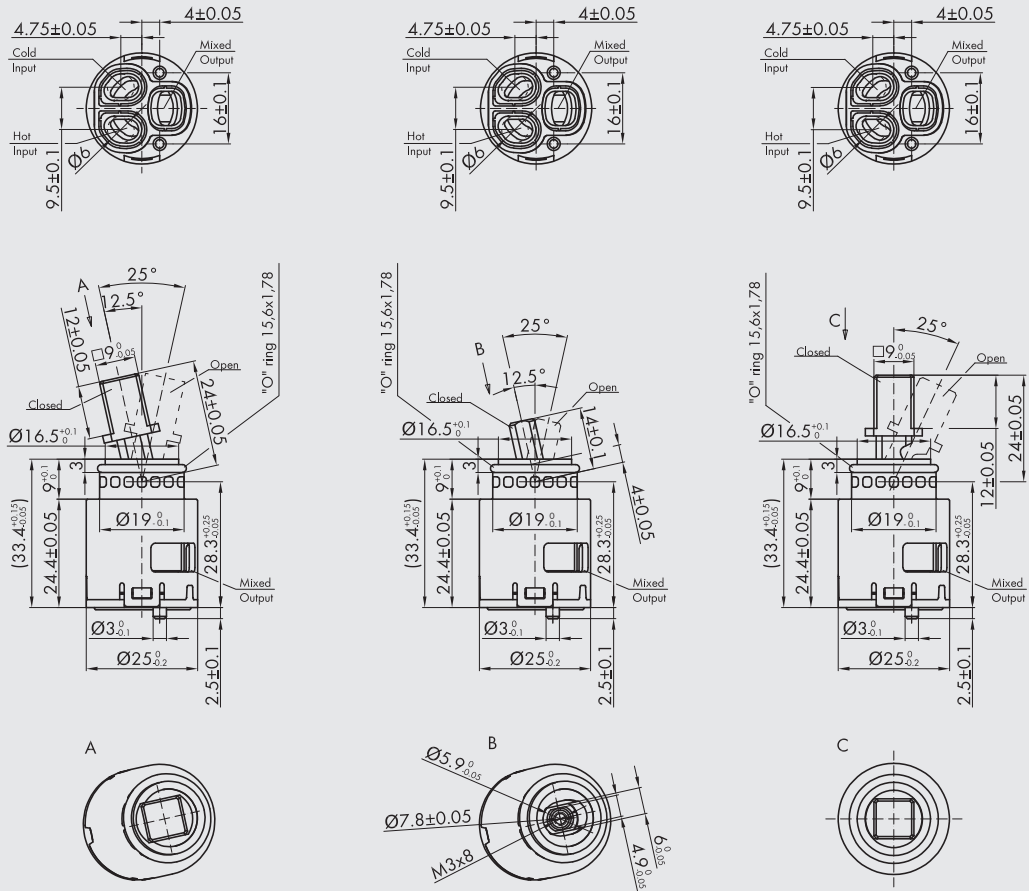
TECHNICAL CHARACTERISTICS OF THE CARTRIDGE:

Opening angle:	25°
Mixing angle:	100°
Max water pressure:	35 bar / 500 psi
Max temperature:	90 °C / 194 °F
Clamping zone:	24.5 ^{+0.1} _{-0.05} mm
Pressure test:	
pneumatic	6 bar / 87 psi
hydraulic	35 bar / 500 psi
Flow rate:	(3 bar / 45 psi, test faucet, EN 817) 13.9 l/min / 3.6 gpm without resistance 12.2 l/min / 3.2 gpm with resistance „C”
Endurance test:	EN 817 70 000 cycles ASME A 112.18.1M 500 000 cycles

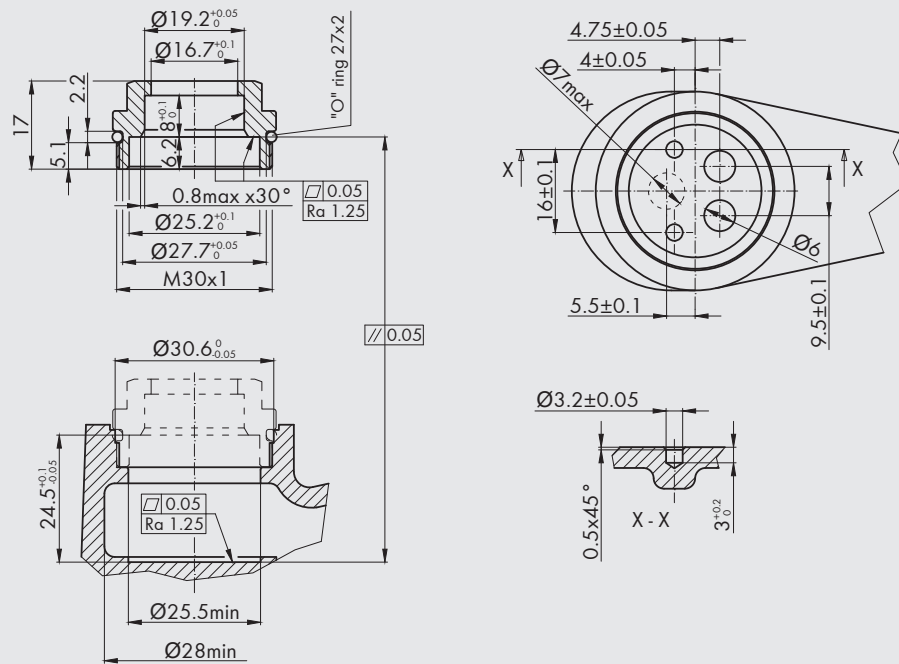
K-25OP DLC

CERAMIC MIXING CARTRIDGE
CONVENTIONAL SINGLE-LEVER TYPE
25 MM SIZE

CARTRIDGES



BODY



K-25OP

K-25OP M

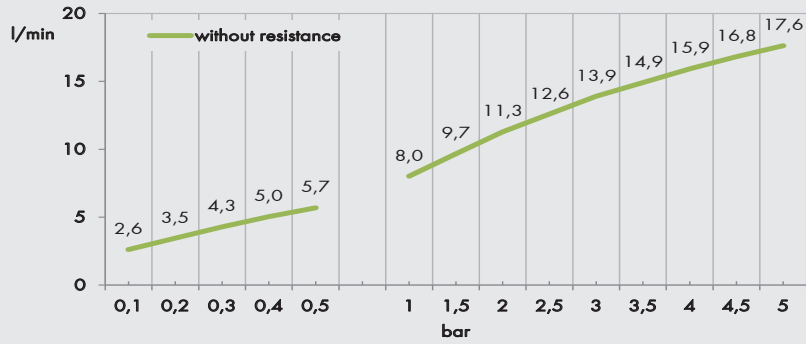
K-25OP S



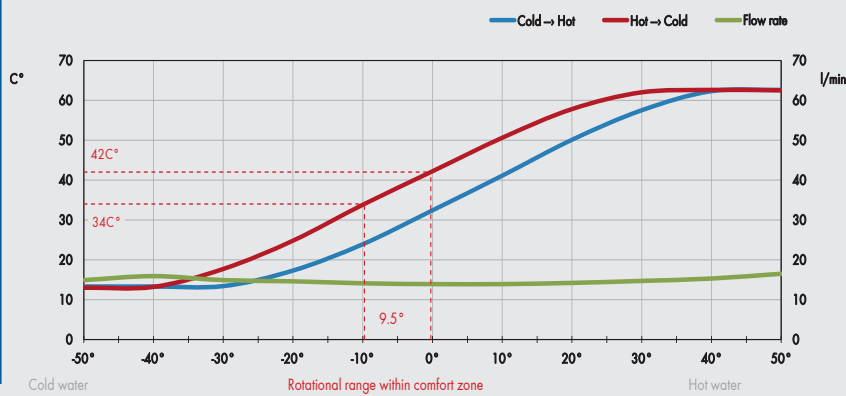
K-25OP DLC

CERAMIC MIXING CARTRIDGE
CONVENTIONAL SINGLE-LEVER TYPE
25 MM SIZE

FLOW RATE & HYSTERESIS CURVE



FLOW RATE CURVES



General requirements for nut and faucet:

1. Made of solid metal material instead of plastic
2. Usage of any lubricant on threads is not allowed
3. No sharp or burry sections at sealing surfaces
4. Recommended tightening torque is relevant to brass-brass connection with 1.5 mm thread pitch.

